



Sonoma Water

Clean. Reliable. Essential. Every Day.

Dry Creek Habitat Projects: 2022 PPFC Update



Dry Creek Habitat Enhancement Project Reaches And Timeline

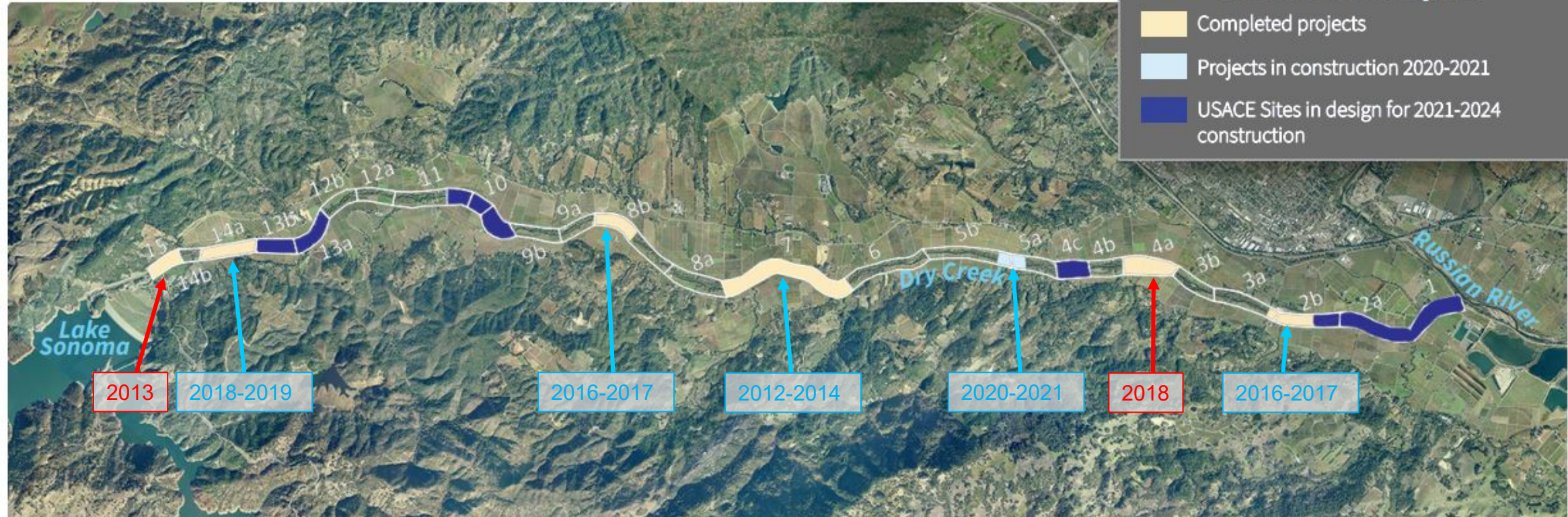
COMPLETED AND IN-DESIGN PROJECTS, 2020



**Sonoma
Water**



**US Army Corps
of Engineers**
San Francisco District



Enhancement Projects

- Completed projects
- Projects in construction 2020-2021
- USACE Sites in design for 2021-2024 construction

<ul style="list-style-type: none"> · Complete design phase · Permitting · Landowner agreements · Begin construction 	<p>MILESTONE 1</p> <p>1 mile of habitat in Dry Creek completed and work begins on miles 2 & 3</p>	<p>MILESTONE 2</p> <p>Complete enhancement of miles 2 & 3</p>	<p>DECISION POINT</p> <p>Evaluate the success of the enhancement projects</p>	<p>MILESTONE 3</p> <p>Enhance 3 additional miles of habitat in Dry Creek for a total of 6 miles</p>
2012	2014	2017	2018	2024



**Reach 5A – Phase 3, Part 3
Bank Repair Completed in 2020
(Photo from 2021)**



**Reach 5A – Phase 3, Part 3
Construction Underway 2021**



**Reach 5A – Phase 3, Part 3
Construction Complete 2021**

Dry Creek Habitat Enhancement Project Reaches And Timeline

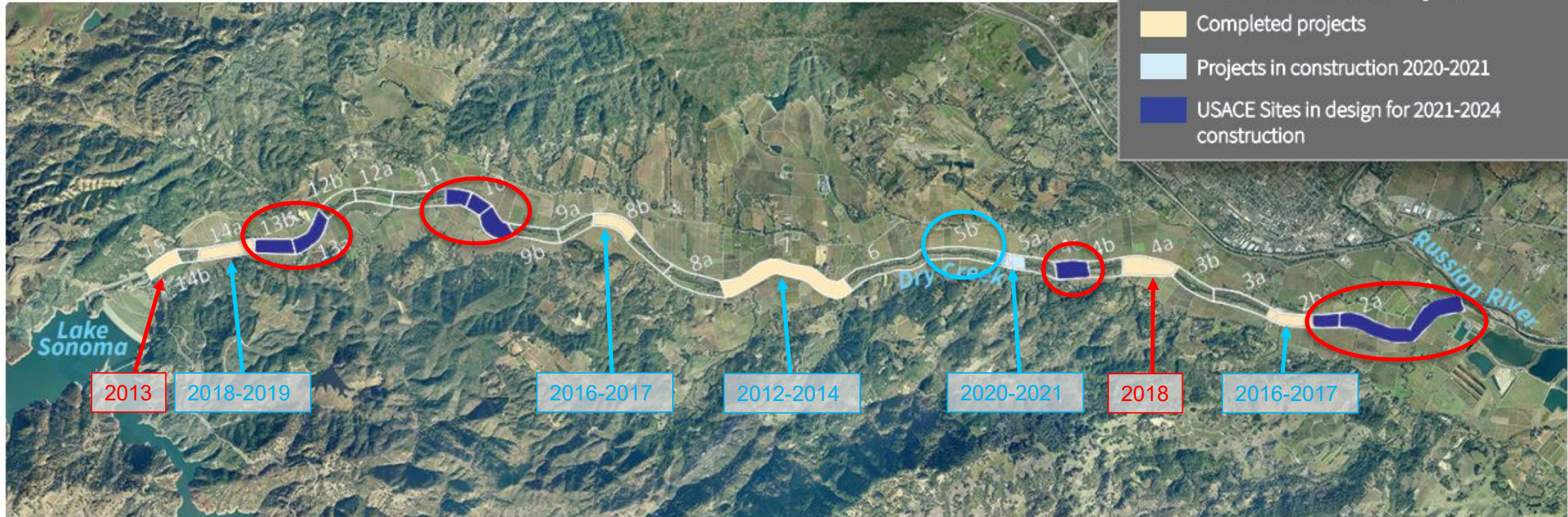
COMPLETED AND IN-DESIGN PROJECTS, 2020



**Sonoma
Water**



**US Army Corps
of Engineers**
San Francisco District



Enhancement Projects

- Completed projects
- Projects in construction 2020-2021
- USACE Sites in design for 2021-2024 construction

	MILESTONE 1	MILESTONE 2	DECISION POINT	MILESTONE 3
<ul style="list-style-type: none"> · Complete design phase · Permitting · Landowner agreements · Begin construction 	1 mile of habitat in Dry Creek completed and work begins on miles 2 & 3	Complete enhancement of miles 2 & 3	Evaluate the success of the enhancement projects	Enhance 3 additional miles of habitat in Dry Creek for a total of 6 miles
2012	2014	2017	2018	2024

**Phase 3 – Reach 5B
Construction 2024**



Dry Creek Road

**New slough bridge
(approximate)**

**Site Reach 5A
Completed 2021**

**Construction
Access**

Grading areas

Staging areas

*JPMB
PROPERTIES
APN: 091-150-012*

*JPMB
PROPERTIES
APN: 089-030-018*

*JPMB
PROPERTIES
APN: 089-030-019*

*JPMB
PROPERTIES
APN: 089-030-020*

GROS-BALTHAZARD

NALLE

Dry Creek

260+00

250+00

240+00

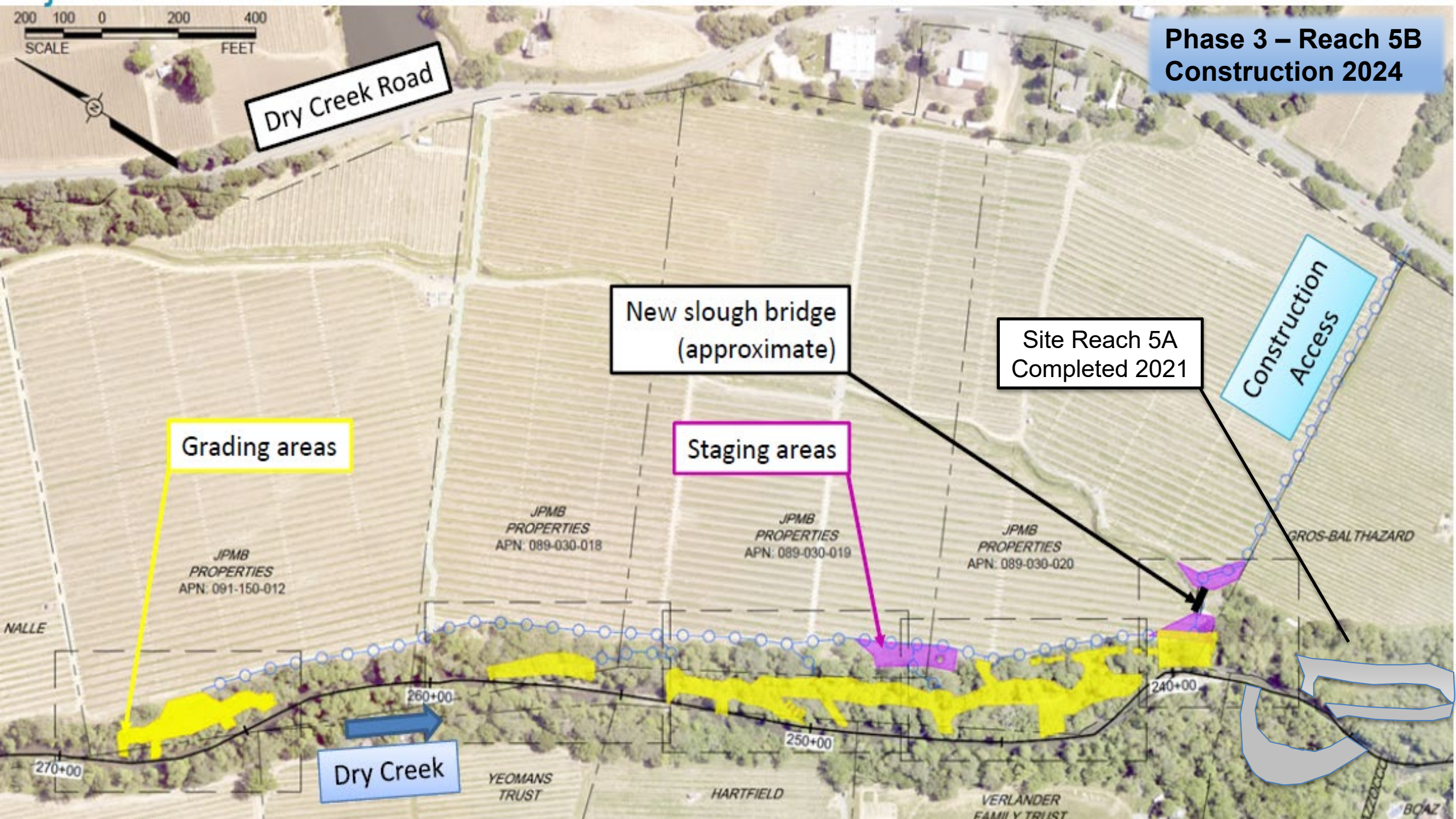
270+00

*YEOMANS
TRUST*

HARTFIELD

*VERLANDER
FAMILY TRUST*

BOAZ



LEGEND	
	STAGING AREA
	EXISTING RIFFLE
	CONSTRUCTED RIFFLE
	LIVE POLE PLANTING
	DEBRIS REMOVAL
	BANK STABILIZATION
	CUT BANKS
	CHANNEL BOTTOM WIDTH (SUMMER BASE FLOW)

5- to 18-foot Channel Bottom Width

Car Debris Removal Bank Repair

Phase 3 – Reach 5B Example

Alcove

Backwater Channel Cut Banks (2.5:1)

Live Pole Planting

Bank Layback (3:1)

Lateral Connection Cut Banks (2:1)

Constructed Riffle Grade Control

Boulder Field for Aggradation

- NOTES
- HABITAT AND FORCING WOOD STRUCTURE PLACEMENT SHOWN FOR REFERENCE ONLY - ACTUAL QUANTITY AS WELL AS PLACEMENT AND ROTATION TO BE CONFIRMED IN FUTURE DETAILED DESIGN.
 - TOPPLE TREES NOT SHOWN - TO BE PROVIDED APPROXIMATELY EVERY 100 FEET OF DRY CREEK CHANNEL LENGTH WHERE OPPORTUNISTIC TREES ARE PRESENT TO SUPPORT DESIGN CONDITIONS AND HABITAT OBJECTIVES.
 - EXISTING TREES WITHIN OR OVERLAPPING THE GRADING LIMIT WILL BE REMOVED.

ZONE 020 NORTH GRADING PLAN
SCALE: 1"=30'

